



*Performing Arts Division –  
Technical Support Unit*

## **East Kowloon Cultural Centre**

60 Ngau Tau Kok Road,  
Kowloon, HK

Phone  
852-3166 2800

Fax  
852-3547 2698

## **CONTACTS**

### **Jimmy FONG**

Senior Manager (EKCC) 1  
Direct Line  
852- 3166 2801  
Email  
[jhwfong@icsd.gov.hk](mailto:jhwfong@icsd.gov.hk)

### **Joey CHO**

Manager (EKCC) 2  
Direct Line  
852- 3166 2805  
Email  
[jhmcho@icsd.gov.hk](mailto:jhmcho@icsd.gov.hk)

### **Andy TSUI**

Resident Technical Manager (EKCC)  
Direct Line  
852- 3166 2825  
Email  
[ayotsui@icsd.gov.hk](mailto:ayotsui@icsd.gov.hk)

## **GENERAL SET-UP**

*The Beats operates on a  
'bare-wall' touring policy.*

*That is, all equipment is nor-  
mally set-up and struck within  
the booking period.*

*Hirers are reminded to allow  
sufficient preparation time to  
hang theatre masking, rig all  
overhead stage lighting and  
set up sound system.*

*Check with our Resident  
Technical Manager for any  
other equipment and tech-  
nical enquiries.*

# **East Kowloon Cultural Centre – The Beats FULL Technical Information**

V. 2025.07.30

Page 1 of 7



EKCC The Beats is a studio  
with amplified instrument/  
equipment and front of house  
console; most suitable for am-  
plified concerts.

## **DIRECTIONS**

### **MTR**

Kwun Tong Line,  
Kowloon Bay Station, Exit B

### **Bus:**

Kowloon Bay Station (East Kowloon Cultural  
Centre) Bus Stop, Amoy Garden Bus Stop

### **From HK Island W:**

Cross Harbour Tunnel → East Kowloon Corri-  
dor → Kai Tak Tunnel → Prince Edward Road  
East → Kwun Tong Road → Fuk To Street

### **From HK Island E:**

Eastern Harbour Tunnel → Kwun Tong Bypass  
→ Kai Fuk Road → Kai Cheung Road → Ngau  
Tau Kok Road → Fuk To Street

### **From New Territories**

Lion Rock Tunnel / Tate's Cairn Tunnel →  
Lung Cheung Road → Kwun Tong Road →  
Fuk To Street

### **Nearby Public Car Parks**

Telford Plaza, Amoy Plaza,  
Lower Ngau Tau Kok Estate



## **LOADING**

### **Lift and Dock on G/F are shared use with The Lab and The Turns**

Clearance for truck: 4.70m (H)  
Truck Occupancy: 2nos. 5-Tone Lorry  
Dock Height: 1.20m

Lift S2 Dims:  
3.60 x 2.50m (W x H)  
2.50m (Depth)  
Door Dims:  
2.50 x 2.40m (W x H)  
3.46 m (Diagonal)

Door Dims: 1.8 x 2.05m (W x H)

Broadcasting Vehicle Parking with Truck  
Occupancy  
7.50 x 3.50m (W x D) (Share use)

## **STAGE ENTRANCE**

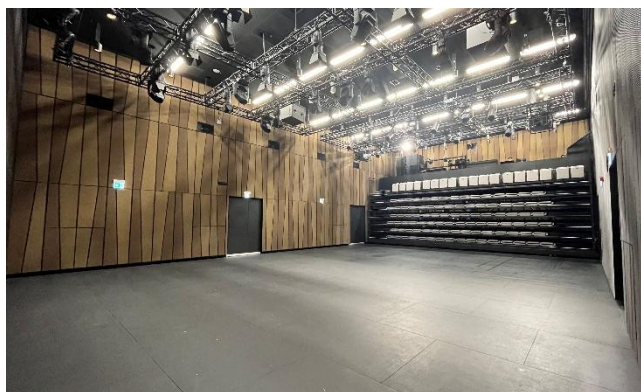
Ngau Tau Kok Road, facing Amoy Plaza

## **PARKING**

Permit required



## AUDITORIUM



**Total Seating** 120  
**Wheelchair Space:** 4

### **END STAGE (120 seats)**

**Width** 11.00m from wall to wall  
**Depth** 7.40m first row to back wall  
**Area** 81.40m<sup>2</sup>

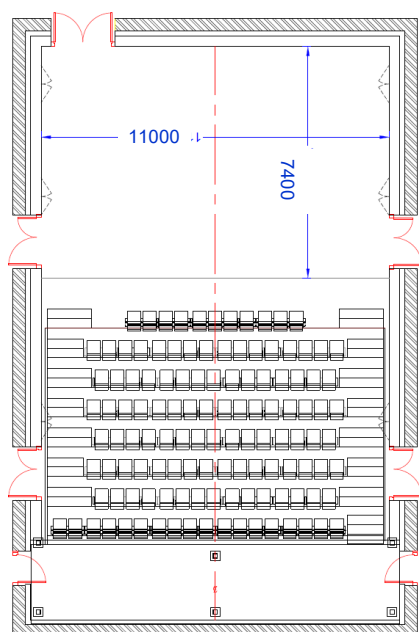
### **Flat Floor (no seats)**

**Width** 11.00m from wall to wall  
**Depth** 14.50m seating platform retracted  
**Area** 159.50 m<sup>2</sup>

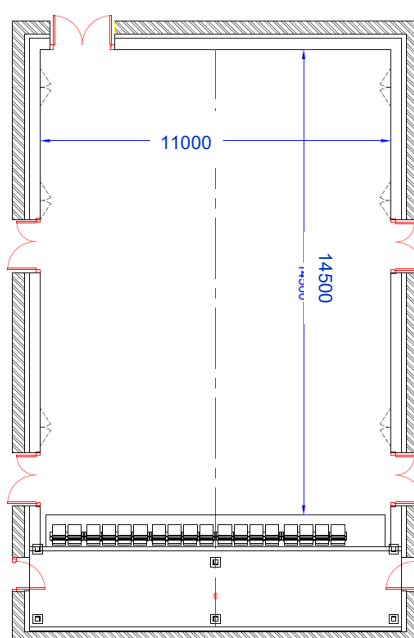
### **REVERBERATION TIME**

(averages at 500Hz and 1kHz) :

0.5s



**End STAGE (120 seats)**



**Flat Floor (no seats)**

### **STAGE HEIGHT**

Clearance under structure

6.50m

Clearance under lighting truss

5.50m

### **STAGE FLOOR**

Black hardboard floor

500kg/m<sup>2</sup> SWL

### **SIDE STAGE**

Not available

### **REAR STAGE**

Not available

### **STORAGE SPACE**

Limited

### **CROSSOVER**

Crossover via dressing rooms corridor



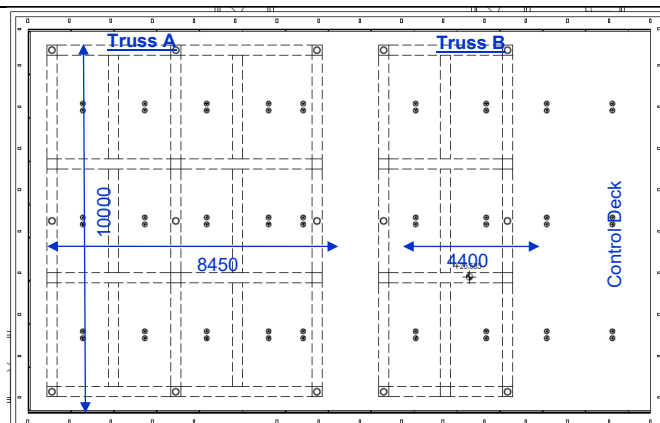
## RIGGING

**Truss A** 10.00 x 8.45m (W x D)

Diameter 48mm  
Loading Capacity 4000kg UDL

**Truss B** 10.00 x 4.40m (W x D)

Diameter 48mm  
Loading Capacity 2000kg UDL



## STAGE EQUIPMENT

**Orchestra Riser** 2.4 x 1.2m (W x L)

No drilling or painting  
on the platform

2-step Stairway

2 203mm (H)  
2 407mm (H)  
2 610mm (H)

2

**Choir Riser**

3 steps  
4 steps

3 sets

3 sets

with Back Rail

**Conductor's Chair**

1

**Conductor's Podium**

1 set

**Conductor's Stand**

1

**Chair**

Musician Chair  
High Stool  
Cellist Stool

50  
5  
5

**Musical Instrument**

Upright Piano

1

Yamaha YUS5

**Music Stand**

Black

50

**Table**

6

**Production Table**

4

1.30 x 0.80m (W x D)

**Lift and Ladder**

Lifting Platform

2

*Operated by competent persons & prior approved by venue management only*

## DRESSING ROOM

2/F (Stage Level) B1 10 persons  
B2 10 persons

All dressing rooms fitted with private toilet and shower. Quick change facilities can be temporarily arranged when required.

## RUNNING WARDROBE

Washing machines, dryers, located at 3/F and shared use with The Lab and The Turns.

Sewing machines, iron & boards and steamers can be loaned from Resident Stage Management Section.





## **LIGHTING**

<b>Power Circuit</b>	ETC Digital Dimmer, 3kW	14
<b>(in True1 Socket)</b>	ETC Sensor3 Digital ThruPower Dimmer, 3kW	32
	ETC Sensor3 Relay Power Control Modules	30
<b>Additional Power</b>	63A 3-phase Socket	2

**Connection must be conducted by a local registered electrical worker.**

**Hirer shall supply adequate circuit protective devices for all bring in electrical installations.**

<b>Control Board</b>	GrandMA3 Compact, pre-set with Mode 3, with full back up control facilities, located in Lighting Control Room.		
<b>House Light</b>	DMX controlled, controlled in Lighting Control Room.		
<b>Profile</b>	167W ETC	Source 4 Lustr 2 15/30°	16
<b>Fresnel</b>	167W ETC	Source 4 Lustr 2 Fresnel	16
<b>LED Automated Lighting</b>	408W HES	SolaPix 7	10
	887W ETC	SolaFrame 1000	16
	930W ETC	SolaWash 1000	10
<b>PAR</b>	180W Silver Star	SS352XCEM	18
<b>Fog Machine</b>	1300W Look Solutions	Viper NT	2
<b>Hazer</b>	1500W Look Solutions	Unique 2.1	2
<b>Music Light</b>	LED Dimmable		30

**Hirer will be provided with base lighting only, unless sufficient preparation time is provided during the booking period and based on the complexity of the intended operation.**

Supply of above equipment subject to availability on receipt of a lighting plan, minimum 3 weeks prior to booking commencement. Equipment availability does vary slightly according to equipment conditions and maintenance. Check with Resident Technical Manager for equipment updates.

All bring-in “Electrical and Stage Lighting Equipment” to be used in LCSD performance venues, shall meet the requirements of “Code of Practice for Electricity (Wiring) Regulations (2020 Edition)”. Please contact the venue management for any electrical safety concerns. Website reference:  
[http://www.emsd.gov.hk/emsd/eng/welcome/em\\_safety.shtml](http://www.emsd.gov.hk/emsd/eng/welcome/em_safety.shtml)

## **SOUND**

<b>Sound System</b>	<b>Main System</b>		
	L-Acoustics SB18i	2	(Fix-installed)
	<b>Surround System</b>		
	L-Acoustics 5XT	11	(Fix-installed)
<b>Main Control Console</b>	DiGiCo SD12		
	Mono Inputs	72	
	Stereo Inputs	36	
	Aux / Subgroup Outputs	36	
	Matrix Outputs	8	
<b>Second Console</b>	DiGiCo SD12	1	



<b>Microphone tie line</b>	Each side of the stage	10
<b>Stage Monitor</b>	L-Acoustics X12	8
<b>Microphone</b>	<b>Dynamic Vocal Mic</b>	
	Shure Beta 58A	6
	Sennheiser e835S	2
	DPA 4018V-B-B01 d:facto	6
	NXN8/S	4
	<b>Dynamic Instrument mic</b>	
	Shure Beta 57A	10
	AKG D112 MKII	1
	AKG SE 300B	2
	<b>Condenser Mic</b>	
	MKH 8040	2
	MKH 8050	2
	MKH 8070	2
	Neuman KM184	6
	Neuman KM185	6
	Shure Beta 52A	1
	AKG C414 XLS	2
	DPA 4055	2
	Shure Beta 87A	2
	<b>Miniature Instrument Mic</b>	
	DPA 4099 Core Class Kit X1	1 set
<b>Wireless Microphone</b>	Sennheiser Digital 6000 Wireless Mic System	
	Including: Handheld – SKM 6000	8
	Body Pack – SK6212	8
<b>D.I.</b>	Radial AR133	2
	RNDI	4
	RNDI-S	2
	Radial USB-Pro	2
	Radial SB-5	2
<b>CD/SD/USB Playback</b>	Denon DN-500BD MKII	2
	Tascam CD500B	2
	Tascam CDR-250N	2
<b>Induction Loop</b>	At auditorium	
<b>Simultaneous Translation System</b>	3 language infra-red wireless simultaneous translation system	
<b><u>COMMUNICATION</u></b>		
<b>SM Desk</b>	At control panel (max. four channels intercom system)	
<b>Intercom System</b>	Auditorium, stage and backstage	
	4-channel Main Station	1 set
	Wired Intercom	8 sets
	Wireless Intercom (Share use with other venues)	6 sets



<b>Cue Light System</b>	Portable	8 sets
-------------------------	----------	--------

<b>Paging and Show Relay System</b>	Dressing room and backstage area
-------------------------------------	----------------------------------

**PROJECTION**

<b>Multimedia Projector</b>	Panasonic PT-RQ35K (at Designated Positions)	2
-----------------------------	--	---

**SERVER**

**Media Server**

**VIDEO STREAMING & RECORDING**

**Streaming**

PTZ Camera	Panasonic AW-UE160 (at Designated Positions)	5
Remote Control Panel	Panasonic AW-RP150	2
Camera Stand	Panasonic Polecam PanaPod	1
Video Switcher	Sony XVS-G1 with 1M/E 16 Button Control Panel	1
Streaming Encoder	Matrox Monarch Edge	1
Video Recorder	BMD HyperDeck Studio 4K Pro	7

**TRACKING**

Blacktrax
Zactrack Pro

**Prior to the booking date, please confirm with Technical Manager the availability of the equipment. All required equipment will be set-up during the booking period; please allow adequate time in the production schedule for equipment set-up, tuning, alignment and test before rehearsal or performance.**





### POOLED LIGHTING EQUIPMENT LIST (Shared by all venues)

<b>Profile</b>	167W	ETC	Source 4 Lustr 2 Profile 15/30°	50
<b>Fresnel</b>	250W	Silver Star	SS826XH	16
<b>LED Automated Lighting</b>	887W	HES	SolaFrame 1000	30
	930W	HES	SolaWash 1000	10

### POOLED SOUND EQUIPMENT LIST (Shared by all venues)

<b>Microphone</b>	<b>Dynamic Vocal Mic</b>			
	Shure SM58			4
	Shure Beta 58A			8
	Sennheiser e835S			2
	Beyerdynamic M88TG			1
	DPA 4018V-B-B01 d:facto			4
	Shure Nexadyne NXN8/S			6
	<b>Dynamic Instrument mic</b>			
	Shure SM57			1
	Shure Beta 57A			8
	AKG D112 MKII			1
	AKG SE 300B			1
	<b>Condenser Mic</b>			
	Audio-Technica AT4041			6
	Sennheiser MKH 8040			6
	Sennheiser MKH 8050			4
	Sennheiser MKH 8070			2
	Neumann KM184			8
	Neumann KM185			8
	Shure Beta 52A			1
	AKG C414 XLS			8
	DPA 4055			4
	Neumann U87 Ai			1
	Shure Beta 87A			6
	<b>Miniature Instrument Mic</b>			
	DPA 4099 Core Rock Kit			1
	DPA 4099 Core Class Kit X1			1

### POOLED PROJECTION EQUIPMENT LIST

<b>Multimedia Projector &amp; Lens</b>	Panasonic PT-RQ35K
	Lens ET-D75LE8 – 7.3-13.8:1
	Lens ET-D75LE10 – 1.3-1.7:1
	Lens ET-D75LE20 – 1.67-2.4:1
	Lens ET-D75LE30 – 2.4-4.7:1
	Lens ET-D75LE40 – 4.6-7.1:1
	Lens ET-D3LEW60 – 0.9-1.1:1
	Lens ET-D3LEU100 – 0.37:1

Equipment on this list is allocated on a **first come first served** basis, on presentation of complete production planning and work flow schematics.  
Pool equipment cannot be reserved for any pending designs.