



East Kowloon Cultural Centre – The Lab

FULL Technical Information

Performing Arts Division –
Technical Support Unit

V. 2025.07.30

Page 1 of 7

East Kowloon Cultural Centre

60 Ngau Tak Kok Road,
Kowloon, HK

Phone
852-3166 2800

Fax
852-3547 2698

CONTACTS

Jimmy FONG

Senior Manager (EKCC) 1
Direct Line
852- 3166 2801
Email
jhwfong@lcsd.gov.hk

Joey CHO

Manager (EKCC) 2
Direct Line
852- 3166 2805
Email
jhmcho@lcsd.gov.hk

Andy TSUI

Resident Technical Manager
(EKCC)
Direct Line
852- 3166 2825
Email
ayotsui@lcsd.gov.hk

GENERAL SET-UP

*The Lab operates on a
'bare-wall' touring policy.
That is, all equipment is
normally set-up and struck
within the booking period.
Hirers are reminded to
allow sufficient preparation
time to hang theatre
masking, rig all overhead
stage lighting and set up
sound system.*

*Check with our Resident
Technical Manager for any
other equipment and
technical enquiries.*



EKCC The Lab is a testbed
with advanced equipment
designated for curation of new
works with application of
technologies for stage
performances.



DIRECTIONS

MTR

Kwun Tong Line,
Kowloon Bay Station, Exit B

Bus:

Kowloon Bay Station (East Kowloon Cultural
Centre) Bus Stop,
Amoy Gardens Bus Stop

From HK Island W:

Cross Harbour Tunnel → East Kowloon
Corridor → Kai Tak Tunnel → Prince Edward
Road East → Kwun Tong Road → Fuk To
Street

From HK Island E:

Eastern Harbour Tunnel → Kwun Tong
Bypass → Kai Fuk Road → Kai Cheung Road
→ Ngau Tau Kok Road → Fuk To Street

From New Territories

Lion Rock Tunnel / Tate's Cairn Tunnel →
Lung Cheung Road
→ Kwun Tong Road → Fuk To Street

Nearby Public Car Parks

Telford Plaza, Amoy Plaza,
Lower Ngau Tau Kok Estate

LOADING

Lift and Dock on G/F are shared use with The Turns and The Beats

Clearance for truck: 4.70m (H)

Truck Occupancy: 2nos. 5-Tone Lorry

Dock Height: 1.20m

Lift S2 Dims:
3.60 x 2.50m (W x H)
2.50m (Depth)

Door Dims:
2.50 x 2.40m (W x H)
3.46 m (Diagonal)

Door Dims: 1.8 x 2.05m (W x H)

STAGE ENTRANCE

Ngau Tau Kok Road, facing Amoy Plaza

PARKING

Permit required



AUDITORIUM



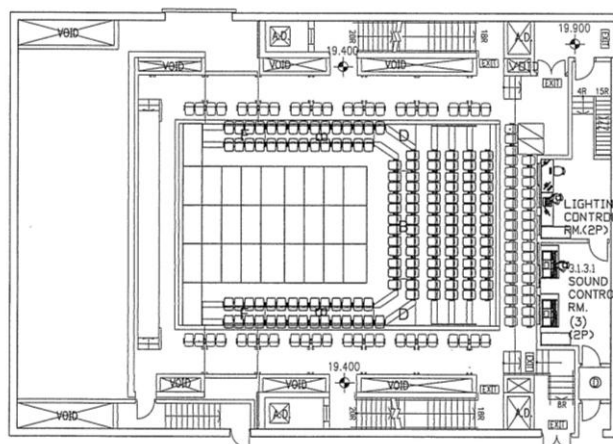
Total Seating:

Long Thrust Stage:	258
End Stage:	243
Wheel chair space	4

REVERBERATION TIME 0.7 ±0.2s
(averages at 500Hz and 1kHz)

Long Thrust Stage

Width	7.56m
Depth	10.68m
Area	80.74m ²

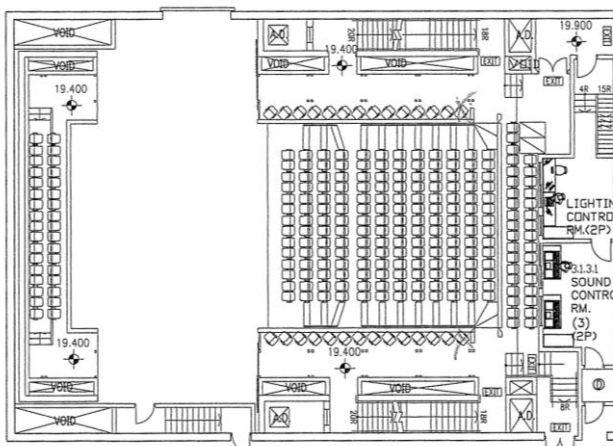


End Stage

Width	10.40m
Depth	8.50m
Area	162.00m ²

Trap Area * 10.40 x 6.00m (W x D)
* Only in End Stage/Flat Floor settings

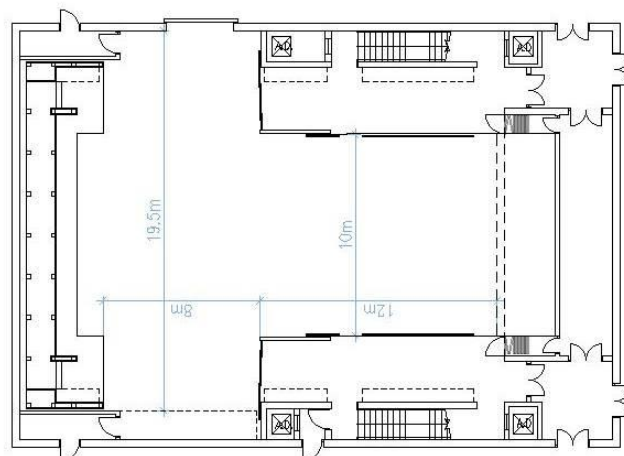
Height from Understage	3.65m
Height from Audience	0.90m





Flat Floor (no seating)

Width	19.50m
Depth	20.00m
Area	276.00m ²
Trap Area *	10.50 x 6.00m (W x D)
* only in End Stage/Flat Floor settings	



STAGE HEIGHT

Underside of grid	9.30m
Underside of lighting bridges	6.30m
Underside of 4 th floor gallery	4.70m
Underside of 3 rd floor gallery	2.20m

STAGE FLOOR

Black hardboard floor	500kg/m ² SWL
-----------------------	--------------------------

SIDE REAR STAGE

Not available

REAR STAGE

Not available

STORAGE SPACE

Limited

CROSSOVER

Passage behind stage and/or under stage

RIGGING

Rigging System

17 bars

Prior submission of fly cue plot will speed up the production process.

Fly cues updating will require additional time for computer input.

Bar Diameter	48mm
Bars interval	0.20m
Bar length	10.00m
Capacity	500kg SWL
Roller Beam (with chain hoist)	5
Hoist	15 (3 per beam)
Capacity	500kg/m ² SWL

STAGE EQUIPMENT

Leg	10	Flat	2.00 x 8.00m
Border	2	Flat	12.50 x 2.00m

Musician Chair	Black	20
-----------------------	-------	----

Musical Instrument	Upright Piano	1	(Share use with The Turns and The Beats)
---------------------------	---------------	---	--



Music Stand Black 20

Dance Tile Black /grey reversible for main stage
For dance show only (Please allow time for laying the tiles during booking time)

Lift and Ladder Lifting Platform 2 *Operated by competent persons only*

DRESSING ROOM

2/F	L1	12 persons
(Stage Level)	L2	10 persons [#]
	L3	2 persons [#]
	L4	3 persons

All rooms fitted with toilets, shower and washbasins.

[#]Dressing rooms fitted with accessible toilet and shower

RUNNING WARDROBE

2 washing machines, 2 dryers, located at 3/F and shared use with the Turns.

Sewing machines, iron & boards and steamers can be loaned from Stage Management Section.



LIGHTING

Power Circuit	ETC Digital Dimmer, 3kW	25
(in True1 socket)	ETC Digital Dimmer, 5kW	4
	ETC Sensor3 Digital ThruPower Dimmer, 3kW	83
	ETC Sensor3 Digital ThruPower Dimmer, 5kW	5
	ETC Sensor3 Relay Power Control Modules	95

Additional Power	63A 3-phase Socket	3
-------------------------	--------------------	---

Connection must be conducted by a local registered electrical worker.

Hirer shall supply adequate circuit protective devices for all bring in electrical installations.

Control Board grandMA3 Compact, located in Lighting Control Room.

House Light DMX controlled, controlled via lighting control board.

Profile	750W	ETC	Source 4 15/30°	5
	750W	ETC	Source 4 25/50°	5

Fresnel	250W	Silver Star	SS826XH	16
	167W	ETC	Source 4 Lustr 2 Fresnel	24

LED Automated Lighting	1kW	ETC	SolaFrame 1000	9
	1kW	ETC	SolaWash 1000	6
	1kW	ETC	Sola Hybeam 1000	2

PAR	180W	Silver Star	SS352XCEM	12
------------	------	-------------	-----------	----

Cyclorama Light	400W	Altman	Spectra 400	4
------------------------	------	--------	-------------	---

Ground Row	400W	Altman	Spectra 400	4	*不連掛勾
-------------------	------	--------	-------------	---	-------

Strobe Light	3kW	Martin	Atomic 3000	2
---------------------	-----	--------	-------------	---

UV light	120W	ADJ	UV COB Cannon 1X	2
-----------------	------	-----	------------------	---



Fog Machine	1300W	Look Solutions	Viper NT	2
		Smoke Factory	Tour Hazer	2
Music Light		LED Dimmable		25

Hirer will be provided with ceremonial lighting only, unless sufficient preparation time is provided based on the complexity of the intended operation.

Supply of above equipment subject to availability upon receipt of a lighting plan, minimum 3 weeks prior to booking commencement. Equipment availability does vary slightly according to equipment conditions and maintenance. Check with Resident Technical Manager for equipment updates.

All bring-in “Electrical and Stage Lighting Equipment” to be used in LCSD performance venues, shall meet the requirements of “Code of Practice for Electricity (Wiring) Regulations (2020 Edition)”. Please contact the venue management for any electrical safety concerns. Website reference:

http://www.emsd.gov.hk/emsd/eng/welcome/em_safety.shtml

SOUND

Sound System	Immersive Sound System	(fix-installed)
	d&b audiotechnik E12	5
	d&b audiotechnik Vi-SUB	2
	d&b audiotechnik E8	22
	d&b audiotechnik 44S	7
Main Control Console	DiGiCo Q225	
	Mono inputs	72
	Stereo inputs (when no mono channels assigned)	36
	Aux / Subgroup outputs	36
	Matrix outputs	8
Second Console	DiGiCo Q225	
Microphone tie line	Distributed locations	
Stage Monitor	d&b E8	6
Microphone	Dynamic Vocal Mic	
	Shure SM58	2
	Shure Beta 58A	4
	Shure Nexadyne NXN8/S	4
	Dynamic Instrument mic	
	Shure SM57	2
	Shure Beta 57A	4
	Shure Nexadyne NXN8/S	4
	Condenser Mic	
	Audio-Technica AT4041	2
	Sennheiser MKH 8040	2
	Sennheiser MKH 8050	2
	Neuman KM184	2
	Neuman KM185	2
	AKG C414 XLS	2
	Shure Beta 87A	2
	Miniature Instrument Mic	
	DPA 4099 Core Rock Kit	1 set



Wireless Microphone	Sennheiser Digital 6000 Wireless Mic System	8
	Including: Handheld – SKM 6000	8
	Body Pack – SK6212	8
CD Playback	Denon DN-500BD MKII	2
	Tascam CD500B	2
	Tascam CDR-250N	2
Induction Loop	At auditorium	
<u>COMMUNICATION</u>		
SM Desk	At upstage (max. four channels intercom system)	
Intercom System	Auditorium, stage and backstage	
	4-channel Main Station	1 set
	Wireless Intercom	6 sets
	Wired Intercom	6 sets
Cue light System	Fixed position – Technical area	
Paging and Show Relay System	Dressing room and backstage area	
Close Circuit TV System	Stage	
Production Desk	Available	
<u>PROJECTION</u>		
Multimedia Projector	Panasonic PT-RQ35KE (at Designated Positions)	2
<u>SERVER</u>		
Media Server		
<u>VIDEO STREAMING & RECORDING</u>		
Streaming		
Camera w/ Robotic Head	Sony HDC-P50 (at Designated Positions)	5
Robotic Head Control	Kxwell KT-RP8910	2
Portable Camera Stand	Panasonic Polecam PanaPod	1
Video Switcher	Sony XVS-G1 with 2M/E 16 Button Control Panel	1
Streaming Encoder	Matrox Monarch Edge	1
Video Recorder	BMD HyperDeck Studio 4K Pro	7
<u>TRACKING</u>		
	Blacktrax	
	Zactrack Pro	

Prior to the booking date, please confirm with Technical Manager the availability of the equipment. All required equipment will be set-up during the booking period; please allow adequate time in the production schedule for equipment set-up, tuning, alignment and test before rehearsal or performance.



POOLED LIGHTING EQUIPMENT LIST (Shared by all venues)

Profile	167W	ETC	Source 4 Lustr 2 Profile 15/30°	50
Fresnel	250W	Silver Star	SS826XH	16
LED Automated	887W	HES	SolaFrame 1000	30
Lighting	930W	HES	SolaWash 1000	10

POOLED SOUND EQUIPMENT LIST (Shared by all venues)

Microphone	Dynamic Vocal Mic			
	Shure SM58			4
	Shure Beta 58A			8
	Sennheiser e835S			2
	Beyerdynamic M88TG			1
	DPA 4018V-B-B01 d:facto			4
	Shure Nexadyne NXN8/S			6
	Dynamic Instrument mic			
	Shure SM57			1
	Shure Beta 57A			8
	AKG D112 MKII			1
	AKG SE 300B			1
	Condenser Mic			
	Audio-Technica AT4041			6
	Sennheiser MKH 8040			6
	Sennheiser MKH 8050			4
	Sennheiser MKH 8070			2
	Neumann KM184			8
	Neumann KM185			8
	Shure Beta 52A			1
	AKG C414 XLS			8
	DPA 4055			4
	Neumann U87 Ai			1
	Shure Beta 87A			6
	Miniature Instrument Mic			
	DPA 4099 Core Rock Kit			1
	DPA 4099 Core Class Kit X1			1

POOLED PROJECTION EQUIPMENT LIST (Shared by all venues)

Multimedia Projector & Lens	Panasonic PT-RQ35KE
	Lens ET-D75LE8 – 7.3-13.8:1
	Lens ET-D75LE10 – 1.3-1.7:1
	Lens ET-D75LE20 – 1.67-2.4:1
	Lens ET-D75LE30 – 2.4-4.7:1
	Lens ET-D75LE40 – 4.6-7.1:1
	Lens ET-D3LEW60 – 0.9-1.1:1
	Lens ET-D3LEU100 – 0.37:1

Equipment on this list is allocated on a **first come first served** basis, on presentation of complete production planning and work flow schematics.
Pool equipment cannot be reserved for any pending designs.